

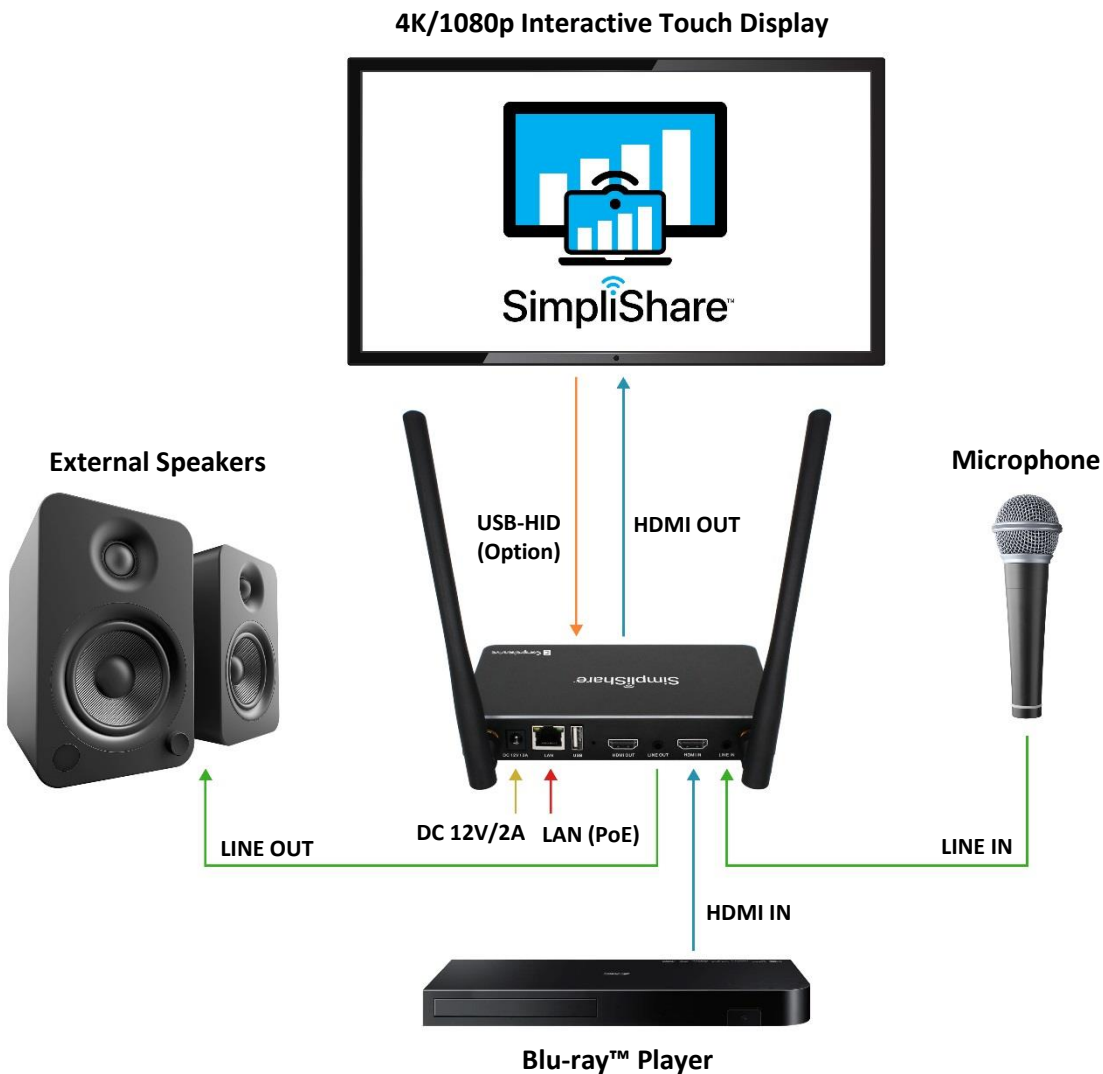
SimpliShare™

4K60 Wireless Presentation System

Quick Start Guide

Connecting Your SimpliShare™ Wireless Presentation System

Connect your equipment to the SimpliShare™ system as shown below*.



(* Display, external speakers, Blu-ray™ player and microphone are not included.)

SimpliShare™

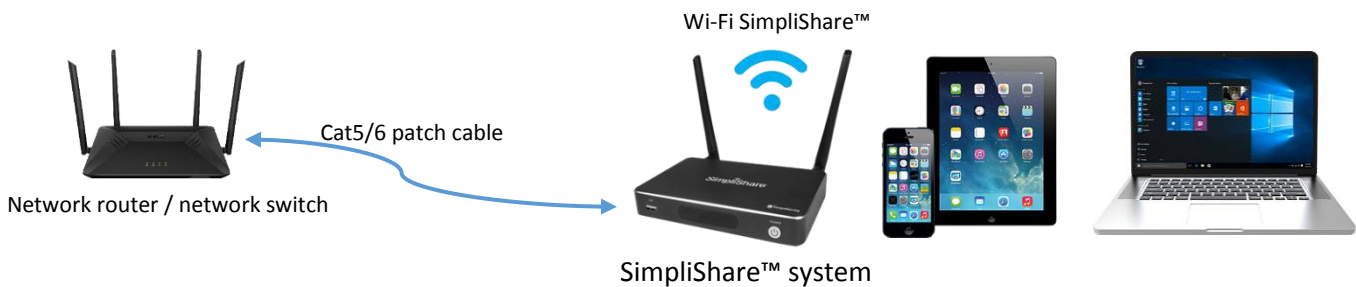
4K60 Wireless Presentation System

Connecting to the SimpliShare™ Stand-Alone Wireless Network

The SimpliShare™ system provides its own stand-alone Wi-Fi network so that users don't have to depend on IT to provide a Wi-Fi network connection.

Please note: It is recommended to connect the SimpliShare™ system to a network router / network switch using the RJ45 LAN connection port behind the SimpliShare™ system.

Once you connect your devices to the SimpliShare™ Wi-Fi or your network router, you will have access to the Ethernet when using your web browser or with any application that requires an Ethernet connection while connected to the SimpliShare™ system.



USB Launcher

The USB launcher contains the macOS®, Windows® OS, Android™ OS and a user manual for you to easily connect and share from your PC.

USB launcher functions:

- **App extraction** - Copy the SimpliShare™ App to your PC.
- **Pairing** - Plug the USB launcher into the USB port of the SimpliShare™ system to pair.
- **Reconnecting** - If you close the PC App, please re-insert the USB launcher into your PC and it will automatically launch the PC App and connect to the SimpliShare™ system in approximately 10 seconds.



USB launcher

SimpliShare™

4K60 Wireless Presentation System

Quick Start Guide

SimpliShare™ PC Application for Windows® OS & macOS®

1

Step 1

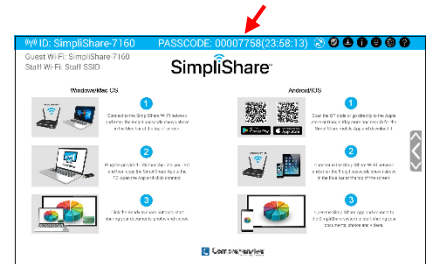
Connecting to your SimpliShare™ Wi-Fi Connection

- Connect your PC to the **SimpliShare™ Stand-Alone Wi-Fi network**.
- Enter the **8-digit Passcode** shown in the blue bar at the top of the SimpliShare™ system's home screen.

a) Connect to SimpliShare™ Wi-Fi



b) Enter passcode



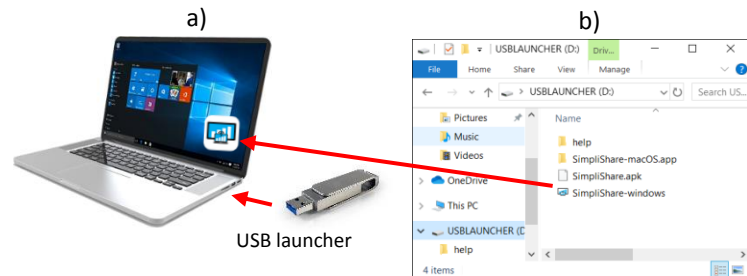
SimpliShare™ system's home screen

2

Step 2

Run PC Application

- Plug the provided USB launcher into the USB port of your PC and open it.
- Copy the SimpliShare™ PC App from the USB launcher onto your computer.



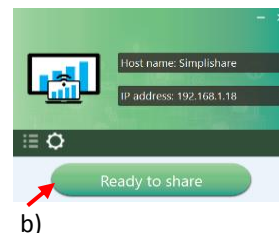
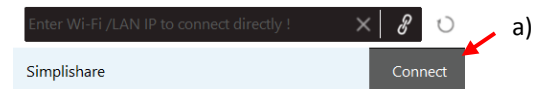
Copy the Windows® OS App or macOS® App from the USB launcher onto your PC.

3

Step 3

Connect & Share!

- Open the SimpliShare™ PC App and Click **“Connect”**.
- Click the **“Ready to share”** button to start sharing your documents, photos or videos to your room's main display.
- Click the **“Stop Sharing”** button to stop your device from sharing to your room's main display.



SimpliShare™

4K60 Wireless Presentation System

Quick Start Guide

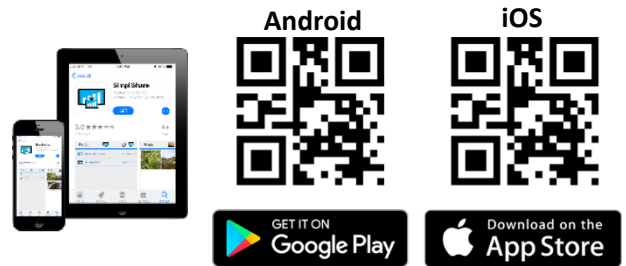
SimpliShare™ Mobile App Install for Android™ & iOS™ devices

1

Step 1

App Search & Download

- Scan the QR code or go directly to the Apple® store or Google™ Play store to find the SimpliShare™ mobile App and download it.



2

Step 2

Connecting to your SimpliShare™ Wi-Fi Connection

- Connect your PC to the **SimpliShare™ Stand-Alone Wi-Fi network**.
- Enter the **8-digit Passcode** shown in the blue bar on the top of the SimpliShare™ system's home screen.

a) Connect to SimpliShare™ Wi-Fi

b) Enter passcode



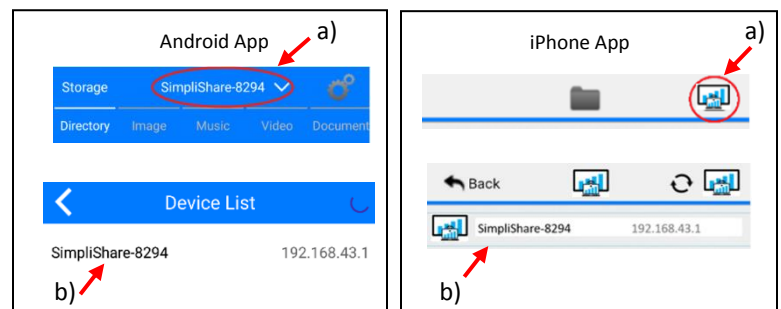
SimpliShare™ system's home screen

3

Step 3

Connect and Share!

- Open the SimpliShare™ App & open the device list.
- Select the SimpliShare™ system from the device list to connect.
- Start sharing your documents, photos or videos from your device to your room's main display.



SimpliShare™

4K60 Wireless Presentation System

Quick Start Guide

Airplay® for macOS® & iOS™ devices

1

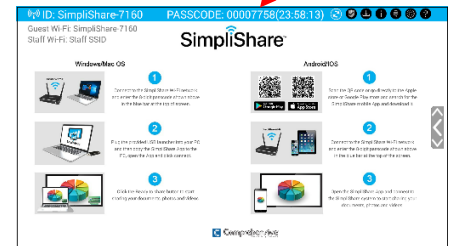
Step 1

Connecting to your SimpliShare™ Wi-Fi Connection

- Connect your PC to the **SimpliShare™ Stand-Alone Wi-Fi network**.
- Enter the **8-digit Passcode** shown in the blue bar on the top of the SimpliShare™ system's home screen.

a) Connect to SimpliShare™ Wi-Fi

b) Enter passcode



SimpliShare™ system's home screen

2

Step 2

Connect via AirPlay®

- Locate and open the **AirPlay®** or **Screen Mirroring** icon on your macOS® or iOS™ device.
- Select the **SimpliShare™** system listed as an AirPlay® device to connect.

AirPlay®

a)

b)



3

Step 3

Share!

- Your device screen should instantly mirror to your room's main display, find your documents, photos or videos and start sharing.



Main display

Apple®, AirPlay® and macOS® are trademarks of Apple Inc., registered in the U.S. and other countries. Windows® is the registered trademark of Microsoft Corporation in the U.S. and other countries. Google™ Play and Android™ are registered trademarks of Google LLC in the U.S. and other countries. IOS is a trademark or registered trademark of Cisco in the U.S. and other countries and is used under license. Blu-ray™ is a trademark of the Blu-ray Disc Association.